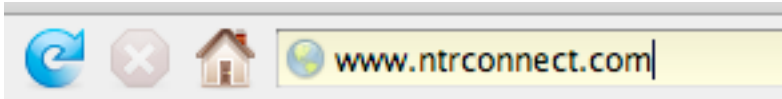
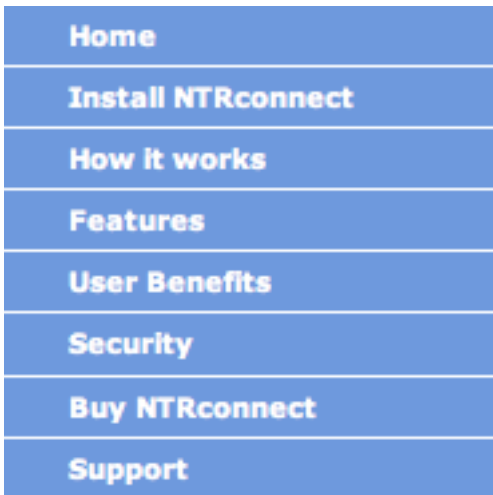


Instructions for Downloading NTRconnect Mac

1. Open your Web browser, and in the address bar type in "www.ntrconnect.com".



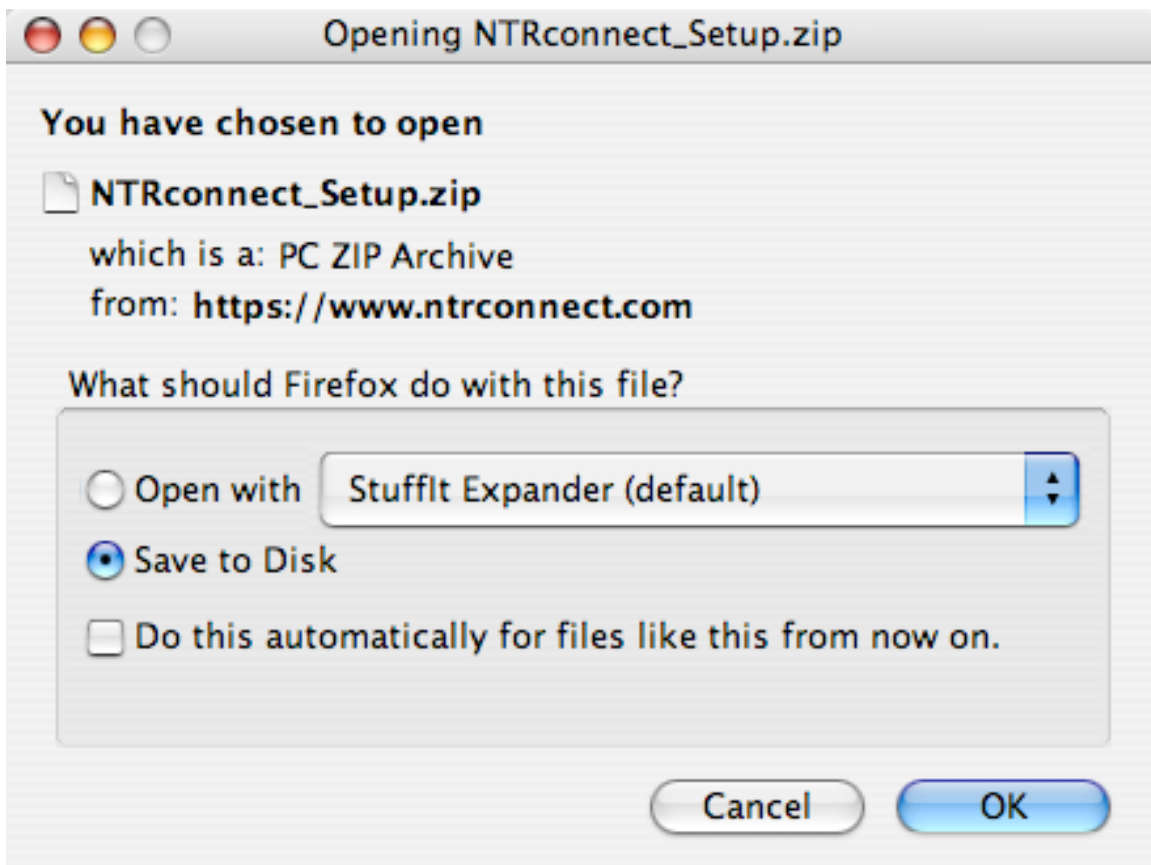
2. In the left hand menu, click on "Install NTRconnect".



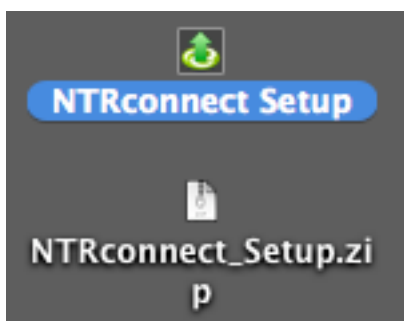
3. Click on the "Download" button.



4. You'll get a box letting you know what you're opening. Click on "Save to Disk" and then "OK".



5. On your desktop, you'll see a file called "NTRconnect_Setup.zip". Double click this file. You'll now have this application icon:



6. Double click the icon, and you'll get a Wizard that will walk you through setting up an account and installing the application. Check the box to accept the Terms of License, then "Next".

This wizard will install NTRconnect on your computer.
To continue, click Next.

WARNING: This program is protected by copyright law and international treaties.

Yes, I accept the Terms of License.

See Terms of License

< Previous

Next >

Cancel

If the person who is wanting to connect to your computer already has an account, you can enter their username and password, which will add your computer to their list of accessible computers. (You can skip steps 7-9).

7. If they don't have an account already, you'll need to create an account with NTRconnect, so click on the "New Account" button.

Register Step 2 of 5

To use NTRconnect you must have a user account.

If you are not an existing user, create a new account here.

[New account](#)

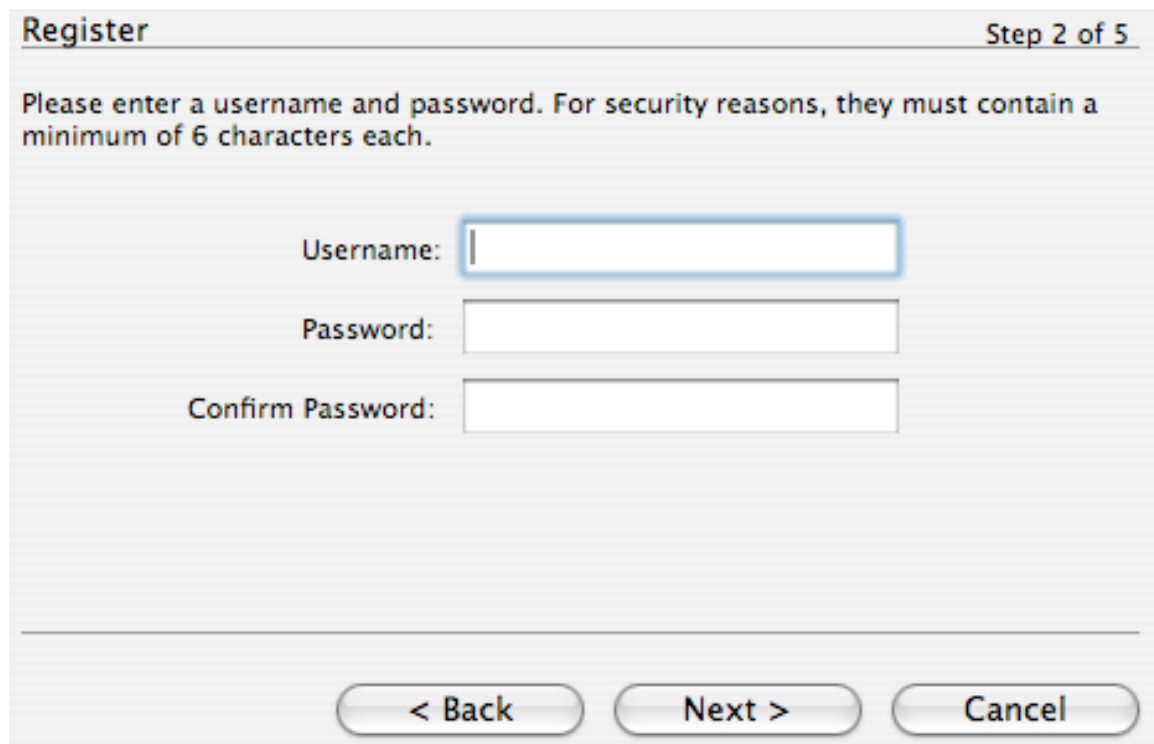
If you are already a registered NTRconnect user, enter your username here:

Username:

Password:

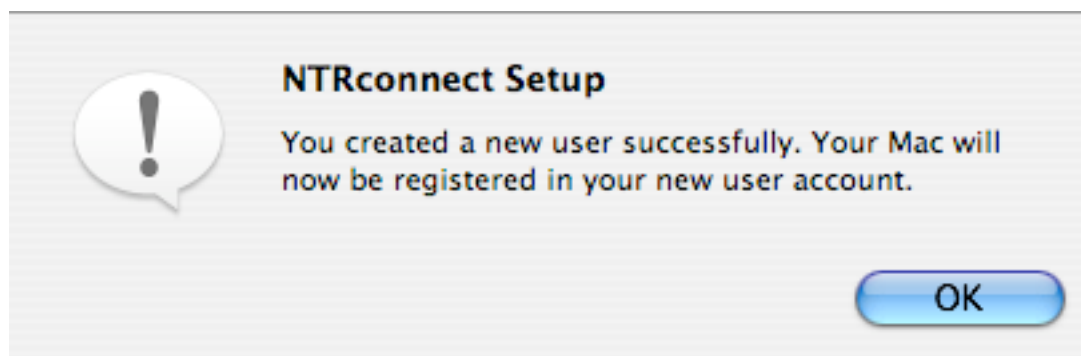
[< Back](#) [Next >](#) [Cancel](#)

8. Choose a username and password, then click "Next".



The image shows a 'Register' dialog box with the title 'Register' and 'Step 2 of 5' in the top right corner. Below the title, there is a message: 'Please enter a username and password. For security reasons, they must contain a minimum of 6 characters each.' There are three input fields: 'Username:', 'Password:', and 'Confirm Password:'. At the bottom, there are three buttons: '< Back', 'Next >', and 'Cancel'.

9. You should get a notice that says your account has been created successfully.



10. Give your computer a name to identify it, and enter the password you just created. Click "Next".

*Note: your name cannot contain certain characters, like the apostrophe in the picture.

Settings Step 3 of 5

Enter the name which will identify this Mac and a password to allow you access it remotely using NTRconnect.


Name:

Use my user account by default
Your password must be at least 6 characters long.

Password:

Confirm password:


11. You'll be asked by your computer to verify that you want to install this application. Enter your computer's password, not the NTRconnect password.

 **NTRconnect Setup.app requires that you type your password.**

Name:

Password:

▶ Details



12. You're done! Just click Finish.

Finish

Step 5 of 5

Wizard completed.

The wizard has successfully installed NTRconnect. Click Finish to exit the wizard.

< Back

Finish

Cancel

13. Be sure to drag your application icon into the Applications Folder before deleting it.