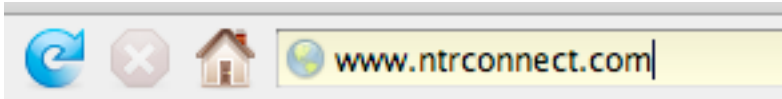
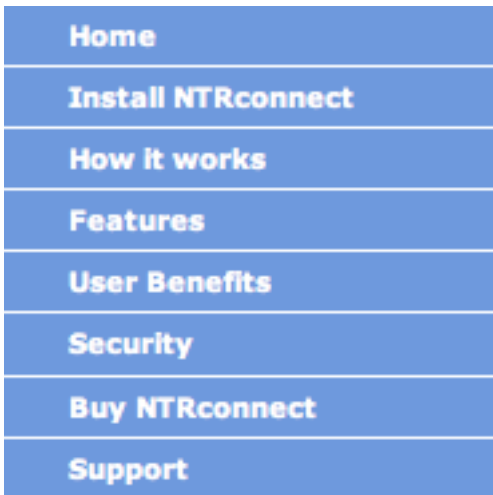


## Instructions for Downloading NTRconnect Windows

1. Open your Web browser, and in the address bar type in "www.ntrconnect.com".



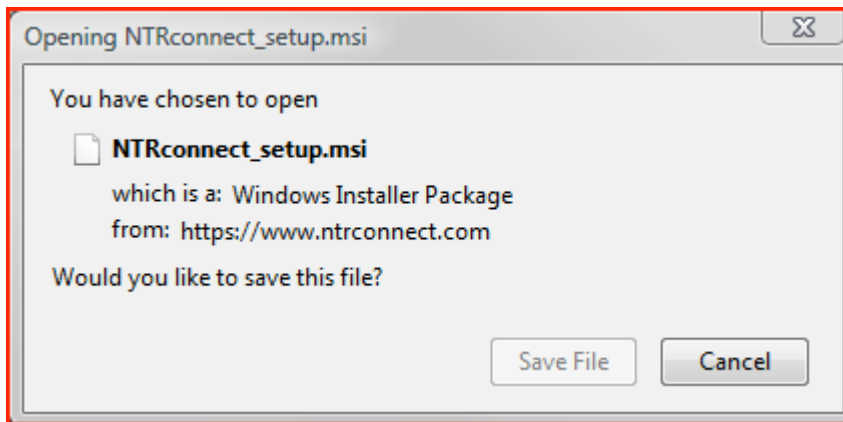
2. In the left hand menu, click on "Install NTRconnect".



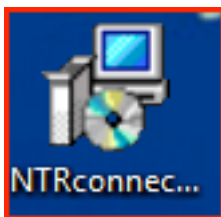
3. Click on the "Download" button.



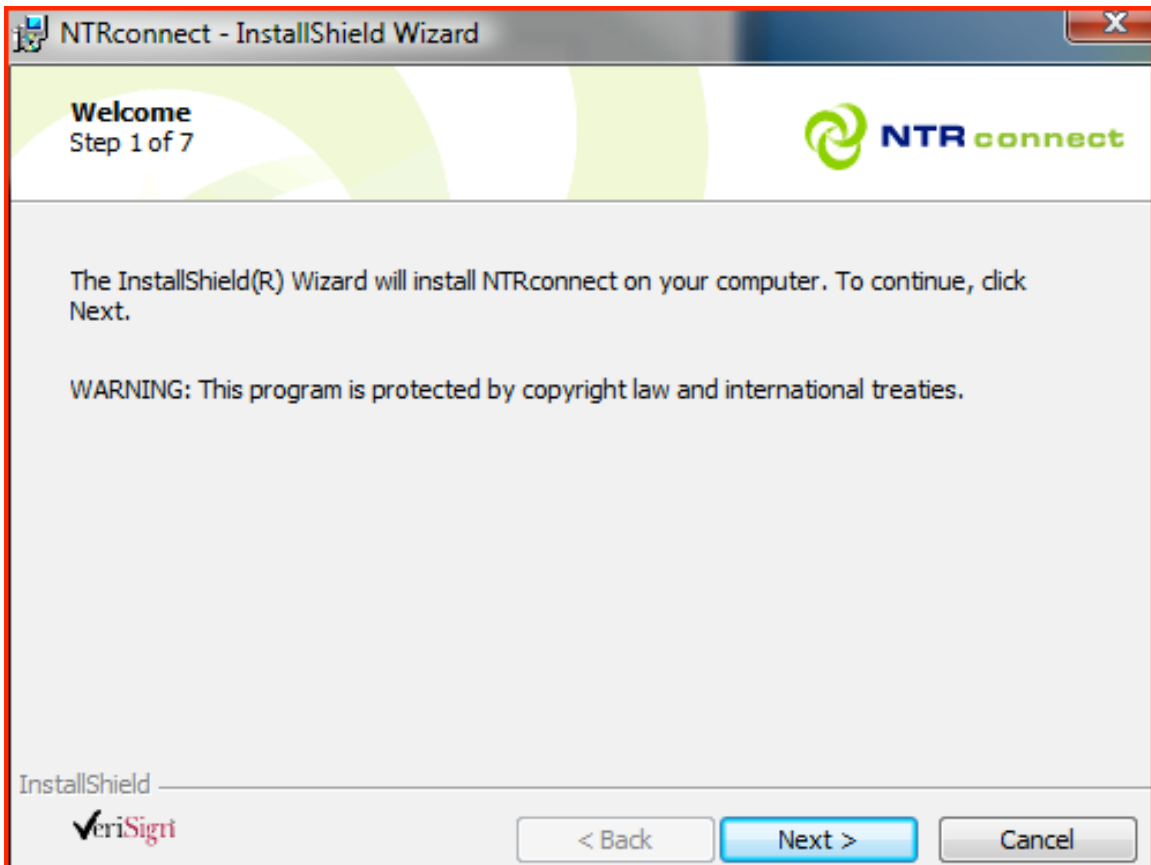
4. You'll get a box asking if you would like to save this file. Click "Save File".



5. On your desktop, you'll see this icon.



6. Double click the icon, and you'll get a Wizard that will walk you through setting up an account and installing the application. Click "Next".



7. Click in the bullet next to “I accept the terms in the license agreement”, and click “Next”.

NTRconnect - InstallShield Wizard

**License Agreement**  
Step 2 of 7



**TERMS AND CONDITIONS FOR THE USE OF THE NTR SOFTWARE**

**Definitions:**

“NTR”: Net Transmit & Receive, S.L., a Spanish company with legal address in Barcelona, Calle Josep Pla #2 - Edificio B3, 1ª Planta, and Tax Identification Number (CIF) B-62173737, or any of its affiliates.

“User”: A person or legal entity, duly represented, that uses the SaaS services

I accept the terms in the license agreement  
 I do not accept the terms in the license agreement

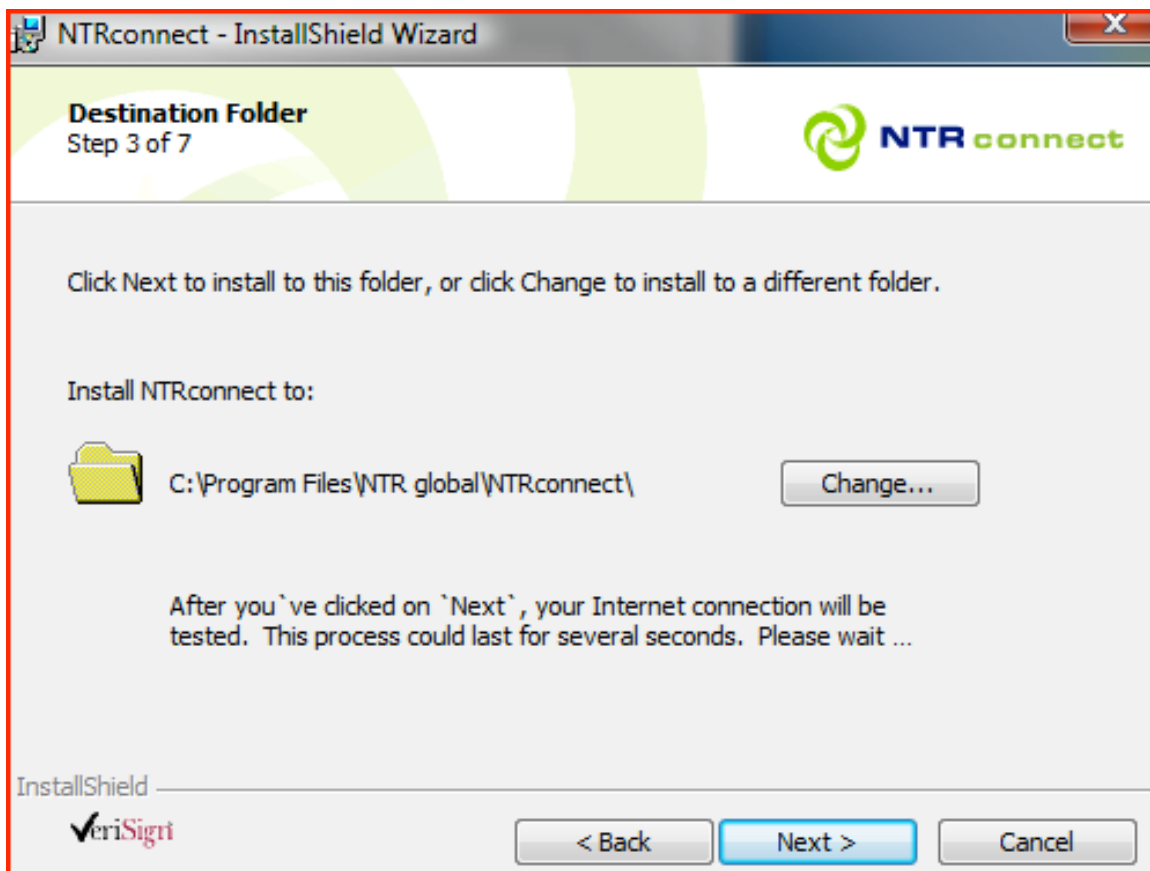
Print

InstallShield

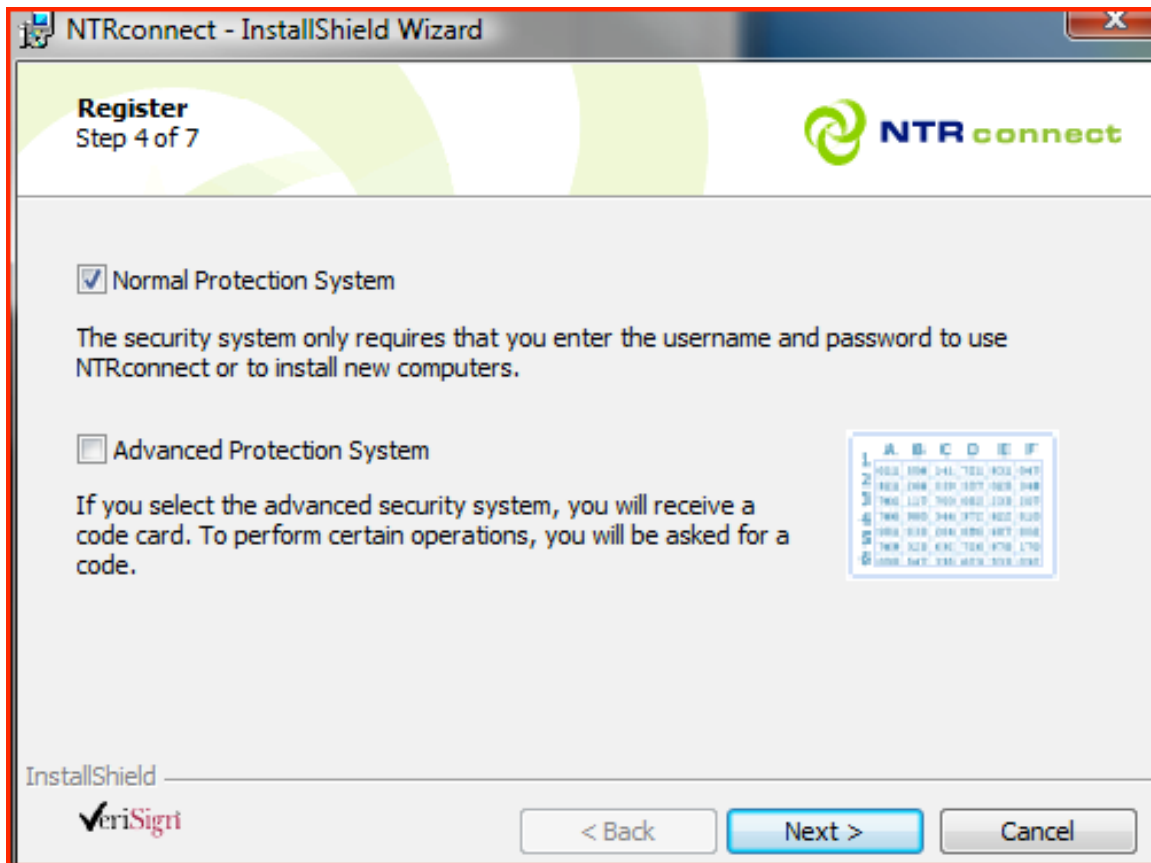


< Back   Next >   Cancel

8. The default location to install applications is under Program Files. Click “Next”.



9. Choose the amount of security. For most people, Normal Protection will do. Click “Next”.



If the person who is wanting to connect to your computer already has an account, you can enter their username and password, which will add your computer to their list of accessible computers. (You can skip steps 10–12).

10. If they don't have an account already, you'll need to create an account with NTRconnect, so click on the "New Account" button.

**Register** Step 2 of 5

To use NTRconnect you must have a user account.

If you are not an existing user, create a new account here.

If you are already a registered NTRconnect user, enter your username here:

Username:

Password:

---

11. Choose a username and password, then click "Next".

**Register** Step 2 of 5

Please enter a username and password. For security reasons, they must contain a minimum of 6 characters each.

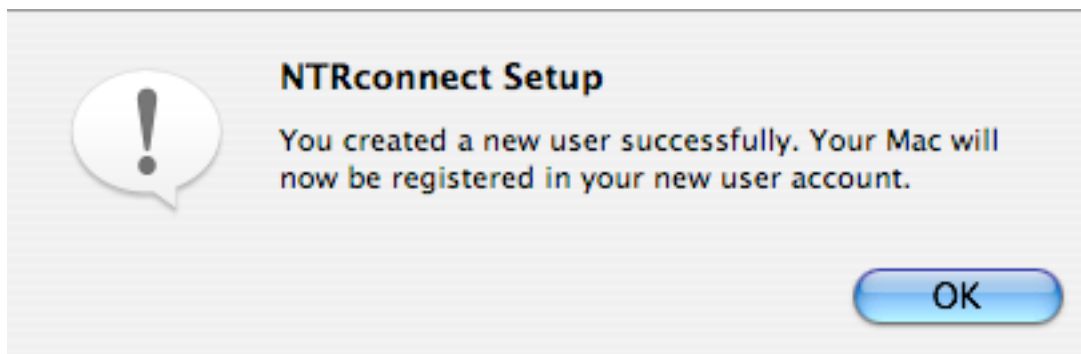
Username:

Password:

Confirm Password:

---

12. You should get a notice that says your account has been created successfully.



13. Give your computer a name to identify it, and enter the password you just created. Click "Next".

\*Note: your name cannot contain certain characters, like the apostrophe in the picture.

Enter the name which will identify this Mac and a password to allow you access it remotely using NTRconnect.

Name:

Use my user account by default

Your password must be at least 6 characters long.

Password:

Confirm password:

< Back

Next >

Cancel

14. You'll be asked by your computer to verify that you want to install this application. Enter your computer's password, not the NTRconnect password.

15. You're done!